

The Streamlined Trumpet Design

(aka the peashooter or long model)

This article traces the origins and companies involved in what I call the streamlined or long model trumpet. They were first introduced in 1928 and lasted up until WWII.

1928 Conn introduced the New Era trumpets with the 56B and 58B models. The 56B (photo 1) had a Bb/A rotary valve and a trigger for the third slide. The 58B (photo 2) had no rotary valve and just a bottom ring on the third slide. These both had a design based on the 22B but with the length 1" longer and height 1" shorter.

1929 Buescher (also owned by Conn) introduced their model 232 Aristocrat trumpet (photo 3).

Vega introduced their Triumphal model trumpet around September of 1929 (photo 4). Conn introduced the model 60B, which was a 56B without the rotary valve.

1930 Several other companies join the bandwagon this year. The H. N. White Co began the Greyhound model 600 (photo 5) and Student Prince model (photo 6) under the Cleveland name.

Martin introduced the Troubadour model (initially named "Sport") (photos 7 & 8) as well as the Indiana Band Instrument Co version of this (photo 9).

1931 Conn introduced the 10B, a medium bore version of the New Era design (below). York had the new model 28.

Now!
the Slender Graceful
New Era Trumpet
with MEDIUM bore

TRUMPETERS have long wished for just such an instrument as Conn now introduces. A trumpet of the most modern design with slim, easy lines; but with a larger bore to give a bigger, more vigorous tone.

This New Era in medium bore is an exact replica of the small bore New Era in appearance and design. It has the same beautiful streamline effect—the same light weight and delicate balance—the same striking individuality that won such an enthusiastic following for the standard New Era among those who appreciate the truly modern.

It differs only in tonal quality. The larger bore makes possible new tonal vigor—a glowing, powerful tone of wondrous richness, produced with surprising ease.

This is the long desired combination for concert bands and larger orchestras, and artists have been quick to realize its possibilities and equip themselves with the new instrument. In fact this new 10B New Era is

already outselling the famous 2B World Symphony.

Dick Stross, well known trumpet soloist, showed an immediate preference for this model. And it won the instant endorsement of such artists as Gustaf and Carlose of the St. Louis Symphony, the trumpeters in Arthur Pryor's Band and B. A. Rolfe's famous orchestra and many other equally prominent artists. Several have already traded in their favorite trumpets to obtain this new model. All say its resonance and responsiveness exceed that of any trumpet they have ever tried.

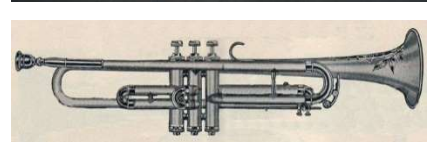
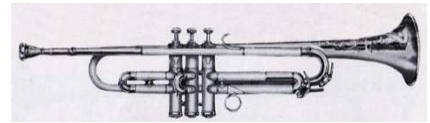
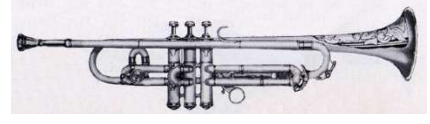
Conn dealers are now showing this new model. You'll want to try it and experience for yourself the new playing effects it makes possible to the trumpeter. See it at your dealer's now. Or write us for free literature, without obligation.

C. G. CONN, *Inc.*, 225 Conn Bldg., Elkhart, Ind.

CONN
BAND
INSTRUMENTS
WORLD'S LARGEST MANUFACTURERS

IF CONN IS NOT ON THE INSTRUMENT IT IS NOT A GENUINE CONN

1932 Conn now offered just the 10B and 58B. Vega introduced the Advanced Triumphal model to replace the Triumphal (photo 10).



Announcing

The NEW Sport Model MARTINS
(Trumpet - Trombone - Cornet)

Distinctly modern; narrow-lined, rakish as a custom-built Sport Model automobile; wondrously graceful; in workmanship worthy of the master artist in metal, Benvenuto Cellini; so easy blowing as to be variably sensitive to a slight; built of the finest French light yellow Trumpet Brass hand-hammered to fine and true a temper as to have all the ring and all the carrying power to dominate over a circus band!—that, together with all the other virtues of the world famous Martin Handcrafts (hand-built) Line, is Martin's New Sport Model Trumpet, Trombone, and Cornet.

A DEALER OPPORTUNITY!

Here is a smashing opportunity to make Real Profits. This New Sport Model Martin is a real business stimulator; you can see, hear, feel its points of difference, its selling qualities. It has universal appeal.

PRIZES FOR A NAME

Along with pucky advertising effort we are stimulating interest in the New Sport Model Martins by offering prizes for a name. For details, drop us a card.

MARTIN
Band Instrument Co., Elkhart, Indiana

1933 Sears offered the Marceau trumpet made in Czechoslovakia (photo 1). [I have no other catalogs from this period to know when this was first or last offered.]

Gretsch offered the New Yorker trumpet in ads found from 1933 and 1935 (photo 2). These were also Czech. made.

The first George Bundy trumpets were Pan American stencils dating to the 1933-1938 period (photo 3). H&A Selmer also offered the Manhattan trumpet that was Czech. made (photo 4).

Pan American and Cavalier (photo 6) offered the 64B (photo 5) and 94B models in the 1930s.

1934 Conn introduced the 40B Vocabell Connqueror model that even had streamlined water keys (below).



The Jones-Koeder Co had the Heraldic model trumpet made c.1934 (photo 7).

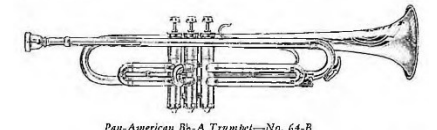
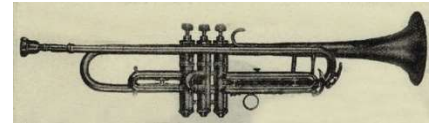
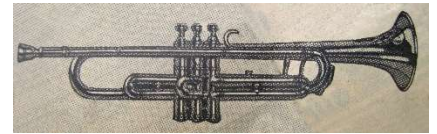
York made the model 28 (photo 8) from c.1931 until at least 1939.

1935 Conn offered the 10B, 40B, and 58B models. Buescher now added the 235 Aristocrat (photo 9) to the 232 model (photo 10). This was the last year for the Martin Troubadour and Cleveland Greyhound models.

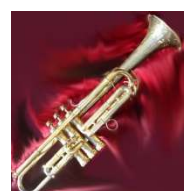
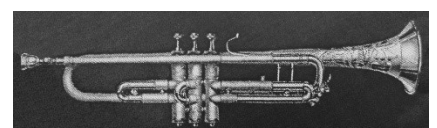
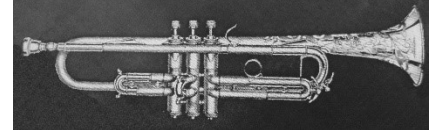
1936 The Ohio Band Instrument Co. made a long Regent model (photo 11). Reynolds followed the practice at White of only offering a long model in the student line. This is the last year that Vega offered their Advanced Triumphal.

1938 This is the last year that Conn offered the 10B and 58B but continued to make the popular 40B. Buescher made the very rare model 211 (photo 12).

1939 Buescher now just had the model 220 Aristocrat (photo 13).



Pan-American B♭-A Trumpet—No. 64-B



1939 This Elkhart Band Instrument Co trumpet (photo 1) was a student version of the Buescher Aristocrat made in 1939. They likely made these throughout the 1930s.

1940 This is the last year for the Conn 40B.

Other long models found:

The Windsor line by Buescher had a long model (photo 2).

The Alliance trumpet was a Cavalier stencil (photo 3).

The Musketeer Maestro (photo 4) was also a Cavalier stencil.

Huttel of Graslitz also made a long model (photo 5), likely for the American market. Photo 6 is from their 1939 catalog.

Cleveland (H.N. White) made the Gladiator trumpet in 1940-41 (below). This appears to be a transitional design as the industry heads back to the traditional taller shape.



The Continental Music Co sold imported stencils from Bohemia as well as the Clarion model made by Pan American (photo 7).

This factory custom Conn trumpet below (author's collection) is marked 56B yet uses slide adjustments from the 2B. It was made in 1929.

